

# Heatcraft Coil Certified Drawing

## DESATURATION CP 1197-D



Customer \_\_\_\_\_ Customer P.O. Number \_\_\_\_\_  
 Job \_\_\_\_\_  
 Written by \_\_\_\_\_ Date \_\_\_\_\_  
 Approved by \_\_\_\_\_ Date \_\_\_\_\_

TAG	QTY	MODEL NUMBER	HAND (Left or Right)

DIMENSIONAL DATA															
CONNECTION					H	I	J	L	M	N	FLANGES				W
SIZE	A	B	C	E							R	S1	S2	T	

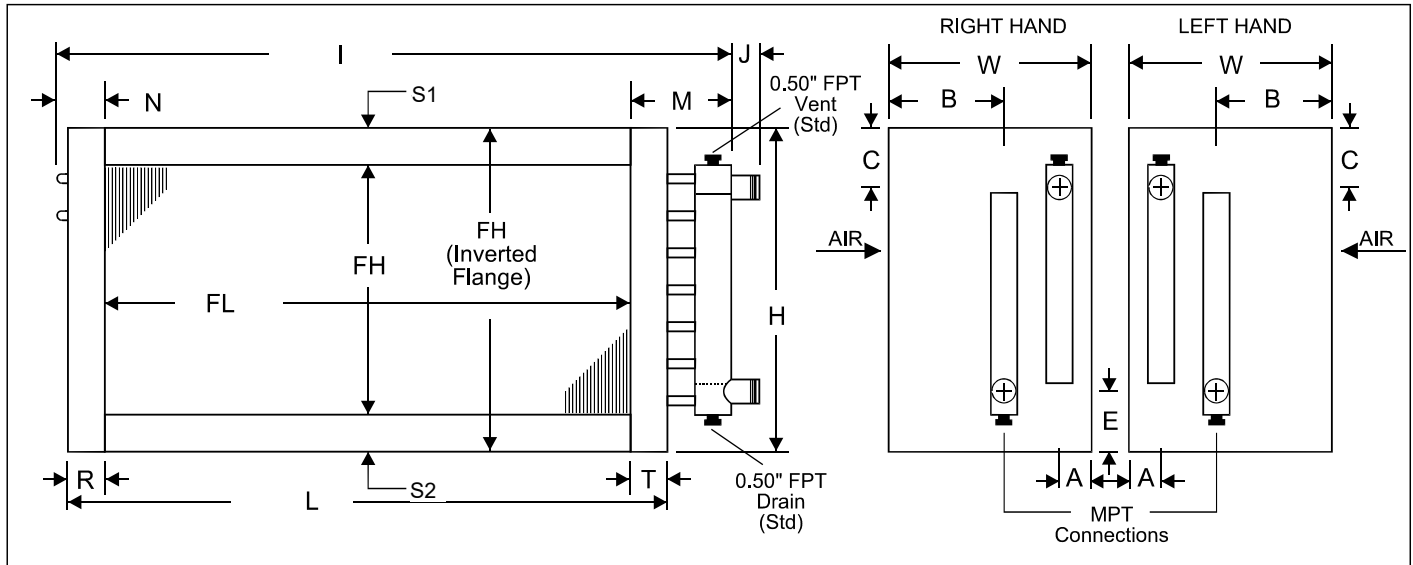
MATERIALS OF CONSTRUCTION			
FINS 1	AL	CU	
FINS 2	AL	CU	
TUBES	CU	CuNi	
HEADERS	CU	CuNi	Carbon Stl
CONN	CS	Red Brass	Cu Sweat
CASING	AL	Galvanized Steel	
	CU	Stainless Steel	

GENERAL OPTIONS	
<input type="checkbox"/>	Inverted Flanges
<input type="checkbox"/>	End Plates Only
<input type="checkbox"/>	Label Kit
<input type="checkbox"/>	Mounting Holes
<input type="checkbox"/>	Corrosion Resistant Coating
<input type="checkbox"/>	Turbospirals

CONN. & V/D OPTIONS	
<input type="checkbox"/>	End Cap 0.125" Tee
<input type="checkbox"/>	Face 0.50" FPT Cpl.
<input type="checkbox"/>	Face 0.25" Tee
<input type="checkbox"/>	Face 0.50" MPT 7" Ext.
<input type="checkbox"/>	Side 0.50" FPT
<input type="checkbox"/>	FPT Connections

<input type="checkbox"/>	End Cap	
<input type="checkbox"/>	Face	
<input type="checkbox"/>	Side	

### REMARKS:



### GENERAL NOTES

- All dimensions are in inches.
- Coils will vent and drain through factory-installed vent and drain fittings when mounted level for horizontal flow.
- If  $S < 1"$  or End Plates Only Case, vents and drains will be located on the face or side of the header. Connection locations other than standard could affect vent and drain locations. Consult factory.
- Mounting holes are optional. 0.375" diameter holes on 6" centers from the centerline of the fin height and finned length are typical for all flanges. Not available with Inverted Flanges or when  $S < 0.75"$ .
- The supply line should be connected to the lower connection on the entering air side for counterflow operation.
- With Inverted Flanges or End Plates Only Case construction, headers will extend a maximum of 0.375" above and below the casing. Vents and drains will be located on the face of the headers.
- Intermediate tube supports are fabricated from heavy gauge stock and supplied per the chart below.

Finned Length (FL)	$\leq 48$	$> 48 \leq 96$	$> 96 \leq 144$	$> 144$
Tube Supports	0	1	2	4