

Customer \_\_\_\_\_ Customer P.O. Number \_\_\_\_\_  
 Job \_\_\_\_\_  
 Written by \_\_\_\_\_ Date \_\_\_\_\_  
 Approved by \_\_\_\_\_ Date \_\_\_\_\_

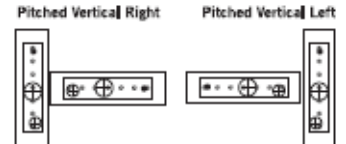
#	TAG	QTY	MODEL NUMBER						FIG#	DIST. TUBE
			TYPE	FPI	ROWS DEEP	FIN	FH	FL		
1										<input type="checkbox"/>
2										<input type="checkbox"/>
3										<input type="checkbox"/>
4										<input type="checkbox"/>

#	DIMENSIONAL DATA																
	CONNECTION													FLANGES			
	SIZE	A	B	C	D	E	F	H	I	J	L	M	R	S1	S2	T	W
1																	
2																	
3																	
4																	

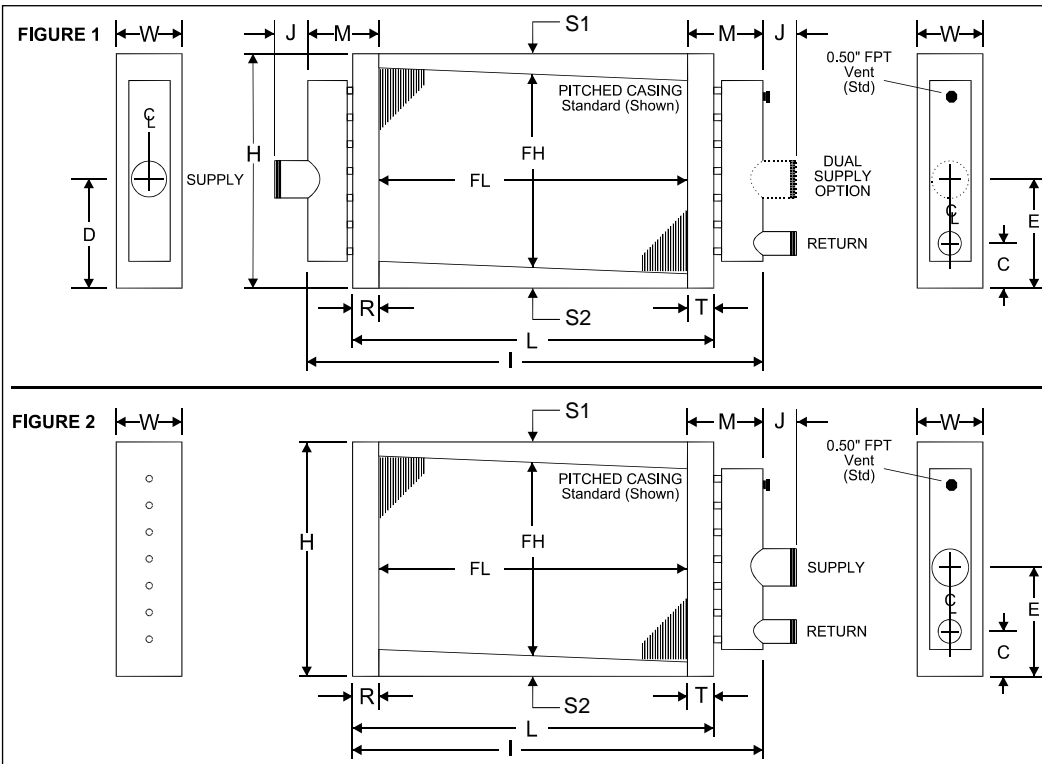
MATERIALS OF CONSTRUCTION				
FINS	AL	CU	CS	St Stl
TUBES	CU	CuNi	CS	St Stl
HEADERS	Cu	CuNi	Carbon Stl	St Stl
CONN	Carbon Stl	Red Brass	St Stl	
CASING	AL	Galvanized Steel		
	CU	Stainless Steel		

GENERAL OPTIONS	
<input type="checkbox"/>	Unpitched
<input type="checkbox"/>	Inverted Flanges
<input type="checkbox"/>	End Plates Only
<input type="checkbox"/>	Slip & Drive
<input type="checkbox"/>	Mounting Holes
<input type="checkbox"/>	Label Kit
<input type="checkbox"/>	FPT Connections
<input type="checkbox"/>	Corrosion Resistant

GENERAL INFO		
Pitched Vertical	Yes	No
Steam Pressure		
Temperature °F		



REMARKS:



<b>Finned Length (FL)</b>	≤ 48	> 48 ≤ 96	> 96 ≤ 144	> 144
<b>Tube Supports</b>	0	1	2	4

**GENERAL NOTES**

1. Tubes are pitched toward return connection when installed for horizontal air flow for FL ≤ 120". Installer must provide pitch on vertical air flow.
2. Mounting holes are optional. 0.375" diameter holes on 6" centers from the centerline of the fin height and finned length are typical for all flanges. Not available with when S < 1.50" or Inverted Flanges.
3. Intermediate tube supports are fabricated from heavy gauge stock and supplied per the chart below.
4. All dimensions are in inches.
5. Connection Location:  
 C= 2.50" ± 0.50"  
 D= 0.125" to 0.5625" above coil center line  
 E= 0.125" to 0.5625" below coil center line  
 C based on 1.50" flange.